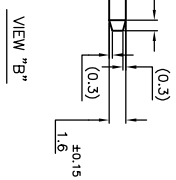
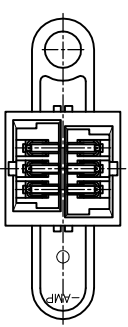
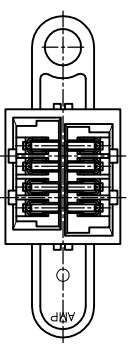
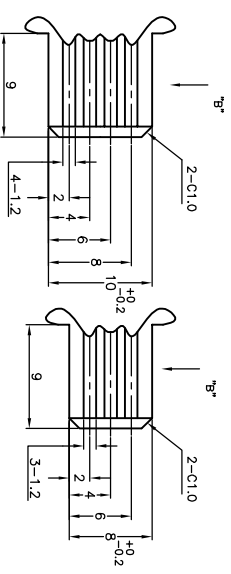
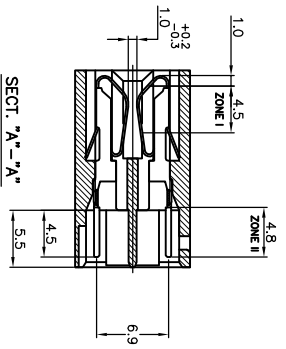
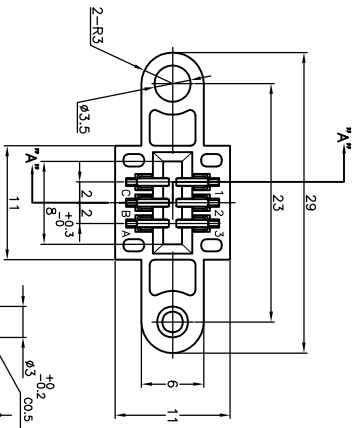
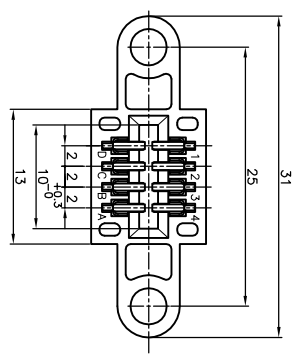


REVISIONS		DATE	DMN	APPD
P	LTR			
B	REVISED	F800-0012-045	24JAN05	C.W I.E

NOTES:

1. MATERIAL: H.S.G. GLASS-FILLED P.B.T COLOR: BLACK
 CONTACT: COPPER ALLOY
2. FINISH: CONTACT: MATTE TIN PLATE NICKEL UNDER-PLATE ALL OVER.
3. FINISH: CONTACT: GOLD PLATE 0.15-0.3um AT CONTACT AREA ZONE I
 MATTE TIN PLATE 0.1-0.3um AT CONTACT AREA ZONE II
 NICKEL UNDER-PLATE ALL OVER.
4. MATING CONN. (WIRE SIDE AWG#26-#28)
 6POS: TYPET173977-3 OR 175778-3
 8POS: TYPET173977-4 OR 175778-4
5. SPEC.: CURRENT RATING 2A MAX./PIN
6. RECOMMENDED MATING P.C.B DIMENSIONS



FINISH	POS.	PART NUMBER
△3	8	292204-3
△4	8	292204-2
△4	6	292204-1

THIS DRAWING IS A CONTROLLED DOCUMENT.

DIMENSIONS: MM
 TOLERANCES UNLESS OTHERWISE SPECIFIED:

0 PLC	± 0.45
1 PLC	± 0.15
2 PLC	± 0.15
3 PLC	± 0.15
4 PLC	± 0.15
ANGLES	± 1°

TOLERANCES UNLESS OTHERWISE SPECIFIED:
 10>* : ±0.2
 30>* > 10 : ±0.25
 100>* > 30 : ±0.3
 ANGLE : ±3°

DMN: 05FE903
 CHK: JIANG
 S. YAO
 APPD: T. SASAKI
 PRODUCT SPEC: 108-60024
 APPLICATION SPEC

DMN: 05FE903
 CHK: JIANG
 S. YAO
 APPD: T. SASAKI
 PRODUCT SPEC: 108-60024
 APPLICATION SPEC

TYCO Electronics
 ASSEMBLY (6P & 8P)
 FOR CT CARD EDGE CONNECTOR
 SIZE: A3
 CAGE CODE: 00779
 DRAWING NO: 292204
 WEIGHT: 0.3g

CUSTOMER DRAWING
 SCALE: 2:1
 SHEET: 1 OF 1
 REV: B